

# MOOSE TUBERS

## 2012



### INDEX

|              |          |
|--------------|----------|
| Onion Sets   | 104      |
| Potatoes     | 107-111  |
| Collections  | 107      |
| Early        | 108, 110 |
| Fingerlings  | 108, 110 |
| Late         | 109, 111 |
| Mid-Season   | 109, 111 |
| Organic      | 108-109  |
| Shallot Sets | 104      |
| Sunchokes    | 107      |



Fedco **Tree Sale** April 27-28 for preorders  
May 4-5 Public Sale

## Ordering information

| Fedco Division         | Goods offered   | Descriptions begin | Order form | Discount deadline | Ordering deadline                 | Shipments                         |
|------------------------|---|--------------------|------------|-------------------|-----------------------------------|-----------------------------------|
| Seeds                  | vegetables, flowers, & herbs                          | page 18            | page 74A   | none              | mail: Mar. 23<br>online: Sept. 30 | January 5–April<br>January 5–Oct. |
| Moose Tubers           | seed potatoes, onion sets                             | page 104           | page 74C   | March 2           | March 16                          | April 2–early May                 |
| Organic Growers Supply | soil amendments, cover crops, tools, supplies & books | page 114           | page 74E   | none              | none                              | year-round                        |

Our FEDCO TREES catalog, available in October, lists fruit trees, berry bushes, ornamentals, perennials and tender bulbs.  
Our FEDCO BULBS catalog, available in June, lists fall-planted flowerbulbs and garlic.

## Full Index on Back Cover

### A Fedco Primer for New Friends and Old

Fedco has four divisions: Seeds, Moose Tubers and Organic Growers Supply, Trees, and Bulbs, and sends out three catalogs annually. We work out of three warehouses in Clinton, Maine. Our business office is in nearby Waterville but will soon move to Clinton. We do not have a retail store. We deal exclusively by mail and internet orders except during designated pickup and public sale days, our booth at the Common Ground Country Fair, and periodic visits to other special events.

In our part of the world frosts can occur nine months of the year and the ground can be frozen for about five months from late November until mid-April.

**Trees** are alive, highly perishable, must be kept cool and wet and cannot freeze. We ship trees and perennial plants only in the spring.

**Fall bulbs** and garlic are alive, perishable, need to be kept cool but cannot freeze. We ship only in fall just before planting time.

**Seed potatoes** and onion sets are alive, perishable, must be kept cool but cannot freeze. We ship only in April and May.

**Seeds** are alive, dormant, must be kept cool and dry, may freeze if kept dry. We ship peak-season orders in January–early spring. From April–early October we ship internet orders only.

**Books and supplies** are not alive. We ship year-round. We ship **cover crops**, which are alive, year-round when available.

### How to Order

Order online at [www.fedcoseeds.com](http://www.fedcoseeds.com).

Mail your order to:  
Fedco Seeds  
PO Box 520  
Waterville, ME 04903.

All mail orders must include check, money order, or Visa or MasterCard information. Orders under \$25 please pay with a check or money order. Please do not send cash. Sorry, we do not accept food stamps.

Please *do not* use certified or express mail—they delay our receipt of your order.

#### Each division has its own order form.

- Please use the proper order form for each division.
- Please do not mix orders from separate divisions on one form.
- You may send in separate forms from more than one division at the same time and pay with one check. Figure totals for each division on the proper form, then add division totals to figure your grand total.
- Use a 2012 catalog. Don't have one? Please request a current edition.

#### Fedco Gift Certificates

Send us payment for the amount of the certificate, the name of the recipient, where to send the certificate and whether to enclose a catalog. We will mail your certificate right away. Fedco gift certificates may be used to order from any of our divisions.

### Fedco Facilitation phone: (207) 873-7333

email: [questions@fedcoseeds.com](mailto:questions@fedcoseeds.com)

Regular phone hours: Jan.–May 15, Mon–Fri, 9am–4pm.  
We are available Wednesdays and at irregular hours the rest of the year.  
Contact us to:

- Request more catalogs or order forms. These may also be downloaded from our website.
- Get answers to ordering questions.
- Receive freight quotes and prices for bulk quantities for Moose Tubers & Organic Growers Supply.
- Resolve problems.

Often we are most efficiently able to provide service by email. We will reply to your emails as soon as we can. Please do not email and call about the same issue without first allowing us a few days to respond.

We are committed to offering reasonably priced quality products and to providing fair wages for our worker cooperative members. We ask your cooperation in helping us keep our labor costs and our prices down by avoiding the following calls or emails which add costs without offering you benefits:

- Online orders: If you received an order number, we have your order. If you have not received a confirmation email, email us and we will send you another copy.
- Frozen spuds: We cannot ship potatoes until April because we do not have a potato storage facility. Seed stock arrives at the end of March.
- Nervous Neds & Nellies: For seeds and supplies please allow at least 2–3 weeks after sending order before calling. For spuds, see above.
- Order corrections: For one or a few mistakes please mail back the correction form on the back of your invoice instead of calling.
- Deadline dilemmas: At, around, or just past deadlines, please send in your order. We'll do the best we can. Please do not call.
- Way past deadlines: We take order deadlines seriously. Please remember the refrain of Red Sox and Braves fans and "Wait till next year!"

### Visit our Website:

[www.fedcoseeds.com](http://www.fedcoseeds.com)

- to order online.
- to download order forms and catalogs.
- for up-to-date information on backorders and out-of-stocks for all divisions.
- to access online specials that arrived too late to make the catalog.
- to see photos of some of our cultivars.

**Original art:** John Bunker, Phoebe Bunker, Laura Childs, Gene Frey, Ian Jerolmack, Jennifer Jones, Samantha Jones, Wendy Karush, Jocelyn Langer, Alicia Letteney, Margaret Liebman, Yvonne Montpelier, Rachel O'Meara, Ryan Parker, Pippa Stanley, Lindsay Robbins, Bria Sanborn, Leslie Stem, Sue Szwed, Gabriel Willow  
**Seeds copy:** CR Lawn  
**Seeds cultivar selection:** Roberta Bailey, Nikos Kavanya, CR Lawn  
**Moose Tubers copy:** Margaret Liebman  
**OGS copy:** David Shipman  
**Editor:** Susan Kiralis  
**Layout:** Laura Childs, Gene Frey, Alicia Letteney, Bria Sanborn

All of our seed is untreated.

## How To Order Seed Potatoes from Moose Tubers

- For mail orders please use the order blank in the center of the catalog on page 74C.
- Variety descriptions begin on page 104.

### Moose Tubers Deadlines

- Orders received by: qualify for:
- March 2 Volume discounts, best selection, early April shipping
  - March 16 Final orders for the season, potato supply limited

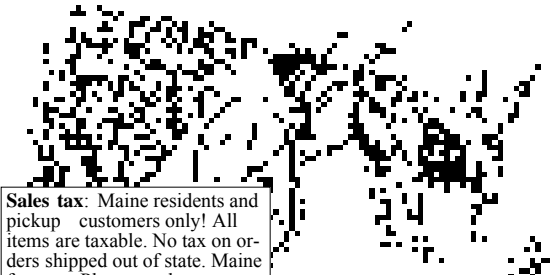
### Moose Tubers Discounts

- We must receive your order by March 2.
- Figure your discount from your order total **before** shipping.
  - Orders over \$200 deduct 5%
  - Orders over \$400 deduct 10%
  - Orders over \$850 deduct 15%

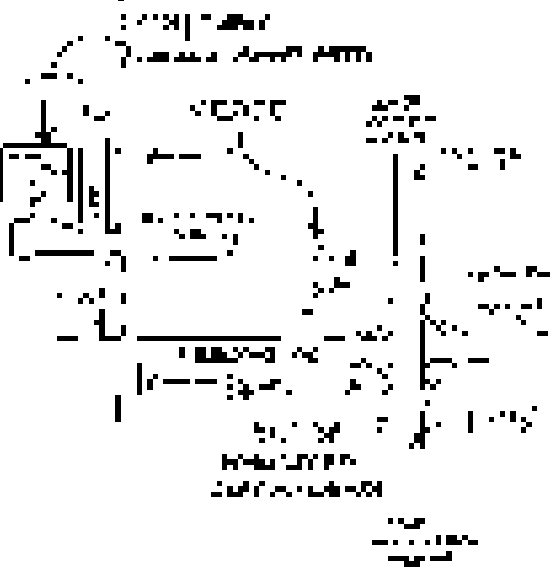
For amounts over 1000 lbs, please download our bulk price list or call or write for one.

### Moose Tubers Shipping

- We begin shipping Moose Tubers orders in early April.
- We cannot ship before that; please do not ask us to do so.
- We will ship orders received by March 2 by April 13.
- We ship common carrier orders beginning April 2.
- We ship sunchokes separately in early May.



**Sales tax:** Maine residents and pickup customers only! All items are taxable. No tax on orders shipped out of state. Maine farmers: Please send us a copy of your state resale certificate or farm exemption. Otherwise we must charge sales tax.



Order online at [www.fedcoseeds.com](http://www.fedcoseeds.com).

With heightened attention to credit card security, we no longer retain any card information in our files. We will charge all orders as we receive them. We will send you a bill or a refund for any adjustments when we ship your order. We cannot charge the adjustments to your credit card.

## To Order Supplies & Cover Crops from Organic Growers Supply

- For mail orders please use the order blank in the center of the catalog on page 74E.
- Order by April 20 for pickup at the Tree Sale.
- There is no final order deadline for OGS. After the Tree Sale, the OGS warehouse will be open Wednesdays from 9:00–3:00 for pickups and walk-in customers.
- Introduction on p. 112, descriptions begin on p. 114.

### OGS Discounts

- There is no deadline for discounts.
- Figure discounts from your total **before** adding shipping charges.
  - Orders over \$200 deduct 5%
  - Orders over \$400 deduct 10%
  - Orders over \$800 deduct 15%
  - Orders over \$1600 deduct 20%
  - Orders over \$2500 call for a quote.



### OGS Shipping

- We begin daily shipping of Organic Growers Supply orders on Jan. 12.
- Generally we will ship your order within one week.
- From mid-May to mid-January we ship once a week, usually Weds.

OGS prices are subject to change without notice. 2012 prices go into effect in November 2011. Check online for updates.

- Contact us if you need more order forms or the Moose Tubers bulk price list, or download them from the web: [www.fedcoseeds.com](http://www.fedcoseeds.com).
- Be sure to include shipping charges (see chart below).
- **Groups:** Order online, see our website for details; or mail us all the individual orders from your group along with one payment and one order form as a cover sheet for group totals and shipping address. We will ship individually packaged orders to one address. Group gets volume discount and shipping rates based on the combined total. We recommend making copies of orders before sending them.

## Shipping

- We ship via **UPS** ground or **USPS Priority Mail**; our choice, based on weight.
- Prices do not include shipping. Use the chart below to figure shipping costs.
- We ship all orders to **Alaska** and **Hawaii** by **Priority Mail**.
- We do not use parcel post for shipping. If UPS can't find your house, please arrange delivery to your workplace or a neighbor, or pay the Priority Mail rates.
- **If you require Priority Mail, use the rates for AK and HI.**

### Common Carrier

- In New England, we have flat rates for pallets weighing up to 2000 lbs. ME, \$90; NH & MA, \$98; VT, \$107; RI, \$92; CT, \$105; NY (zip codes beginning with 105-109, 120-149) \$128. For home or school deliveries, add \$100 per pallet.
- For delivery to other states: If your shipment weighs more than 1000#, call us with the estimated weight and the destination zip code. We will check with trucking companies and quote you a price. In some instances UPS will be cheaper. Include with your order a phone number where you can be reached during the day.

### Pickup

**OGS orders** We will send a postcard (usually within 2 weeks of receiving your order) with directions and your order number when your order is ready to pick up. From Jan. 6 through April 20 you may come **Wednesdays or Fridays** 9:00–3:00. After April 20, you may pick up **at the Tree Sale**. After May 5, you may pick up **Wednesdays** 9:00–3:00. If your order is over 500 lbs, please call the day before you plan to come or be prepared to wait.

**Moose Tubers orders** will be ready for pickup **at the Tree Sale**. If you need your order before then, call in advance to make arrangements. Fri and Sat, April 27–28, from 9:00–3:00 are reserved for customers with orders to pick up. Public Tree Sale days are Fri and Sat, May 4–5, from 9:00–3:00. We will send a postcard with directions and your order number.

- We do **not** ship to **Canada**, and will not provide materials required for importation permits.

| If your order weighs  And your zip code begins with: | 0-2 lbs. | up to 5 lbs. | up to 10 lbs. | up to 15 lbs. | up to 20 lbs. | up to 25 lbs. | up to 30 lbs. | up to 35 lbs. | up to 40 lbs. | over 40 lbs. | over 200 lbs. | over 500 lbs. | For larger orders, consider Common Carrier. Up to 2000 lbs:<br>ME \$90.00<br>NH & MA \$98.00<br>VT \$107.00<br>RI \$92.00<br>CT \$105.00<br>NY (except NYC) \$128.00<br>For other locations call us at 207-873-7333 for more information. |
|--|----------|--------------|---------------|---------------|---------------|---------------|---------------|---------------|---------------|--------------|---------------|---------------|---|
| 038-049  | \$5.20   | \$11.25      | \$12.50       | \$13.25       | \$14.00       | \$15.00       | \$16.00       | \$16.75       | \$17.75       | 39¢/lb       | 32¢/lb        | 25¢/lb        |   |
| 010-037,050-067,120-123                              | \$5.55   | \$11.75      | \$12.50       | \$13.75       | \$15.00       | \$16.50       | \$17.75       | \$19.00       | \$20.50       | 41¢/lb       | 37¢/lb        | 28¢/lb        |   |
| 005, 068-119,124-149                                 | \$6.20   | \$12.75      | \$13.50       | \$14.00       | \$15.50       | \$17.00       | \$19.00       | \$20.50       | \$22.25       | 48¢/lb       | 38¢/lb        | 34¢/lb        |   |
| 150-297,400-499                                      | \$7.90   | \$13.00      | \$14.00       | \$14.75       | \$17.00       | \$19.00       | \$21.25       | \$23.50       | \$25.50       | 55¢/lb       | 45¢/lb        | 38¢/lb        |   |
| 298-399,500-582,600-726                              | \$8.60   | \$13.50      | \$14.50       | \$16.75       | \$19.75       | \$22.50       | \$25.50       | \$28.50       | \$31.25       | 69¢/lb       | 55¢/lb        | 43¢/lb        |   |
| 583-593,727-778                                      | \$9.15   | \$13.75      | \$15.75       | \$19.00       | \$22.25       | \$25.50       | \$28.75       | \$32.00       | \$35.25       | 80¢/lb       | 64¢/lb        | 47¢/lb        |   |
| others except AK & HI                                | \$10.20  | \$14.50      | \$16.75       | \$20.75       | \$24.75       | \$29.00       | \$33.00       | \$37.25       | \$40.50       | 85¢/lb       | 71¢/lb        | 57¢/lb        |   |
| AK, HI & <b>Priority Mail</b>                        | \$10.20  | \$18.35      | \$31.75       | \$41.75       | \$53.50       | \$59.25       | \$69.00       | \$76.00       | \$82.00       | \$2.05/lb    |               |               |   |



## Certified Seed Potatoes, Onion Sets & Sunchokes

Welcome to Moose 2012, our 26th listing of shallot and onion sets, sunchokes, and certified potato seed. Our comprehensive potato selection includes over 30 varieties of organic and conventional seed, boasting the best of both heirlooms and modern-bred marvels, ranging from early-maturing moist red-skinned premium-price-fetching boilers to late-maturing russeted dry long-storing bakers. For an overall comparison of potato varieties, see the chart on page 106.

As our customer base grows and we handle thousands more pounds of seed each year, our objective remains to bring you the highest quality seed and serve as a distributor for the farmers growing with good health.

We understand the pressure and delight of an expanding economic sector. Our products offer the opportunity for easy growing and dramatic yields. We are always culling our selection for the most versatile and dependable varieties to deal with consistently novel weather patterns, and a market with critical standards.

Quality is of utmost importance for your growing business and ours. After more than several packages of Adirondack Blue and Purple Majesty arrived as blackish-blue mush on the doorsteps of growers along the East Coast, we decided to nix them from the lineup. Blue Gold, also known as Peter Wilcox, was the shining star of this year's trials, and will remain our only blue potato until another proves worthy.

The late spell of heat at the end of September sweetened up the slice for this year's growing season. The sun blessed us this summer, although we endured a small spell of drought and a hurricane. The blight menaced most folks, but not before a productive solanaceous crop fruited.

At home, my crew decided to trade salad mix for cows in our crop and critter operation. After four months of bottle feeding, milking, fencing, milk culturing, and curd cutting, we realized that much of the mixed vegetable routine had been adulterated. We skipped the fishmeal entirely. We missed all but three lettuce head seedlings and definitely did not grow enough carrots or spinach for our Portland market. As far as fertility is concerned, previous cover cropping and intensive grazing saved the day for the home fields, but our loaner field in Thorndike suffered. We treated the garlic, tomatoes, squash, and spuds bimonthly with a fishy, kelpy, raw milky, Bioplin foliar feed. The plants responded with vigorous dark green growth and fruited like wild. Check out Bioplin on page 117.

As I write this, the City of Portland debates the status of its raw milk regulation. Any farmer in the state of Maine with a state-licensed dairy and a mobile vendor's permit can legally sell raw milk, except in Portland. The city has developed its own legislation regarding the issue, making criminals out of the heroic grass farmers and raw cheese makers. So what do we do in times like these, when large industries butt their way into farming, whether they be milk truck lobbyists or seed companies gobbling up patents?

As growers and grassroots agricultural traders, we can strive for more resilient growing systems and continue building cooperative relationships amongst ourselves. Please enjoy the varieties, supplies and tools we have to offer.

Good luck growing.  
Margaret Liebman

### Complete Ordering Instructions

See page 4.

Order form on p. 74C in center of catalog.

### Bulk Prices

If you are ordering over 1000 lbs, call or write for a bulk price list. Or find it online: [www.fedcoseeds.com](http://www.fedcoseeds.com) and click on Moose Tubers.

## ONIONS & SHALLOTS *Allium cepa*

Onions and shallots are day-length sensitive—to produce large bulbs, plant in spring as soon as soil is workable. Shallow rooted, they require rich, weed-free soil, and consistent water. Plant onions 3" apart in rows 1' apart and thin to 6" as they grow. Mulch when they are 1' tall. Plant shallots 4" apart in rows 1' apart. During the season, pull any plants that begin to bolt and use them as scallions. Clean and grade before storage. Process any double-bulbed onions instead of storing them because they won't keep. Ideal storage conditions are temperatures at 32° with humidity of 60–70%. If you can't do that, work to get a total number of 100. For example, at temperatures from 50–55°, humidity should be 45–50%.

1# of onions contains approximately 200 sets. 1# of shallots contains approximately 15 bulbs.

**Stuttgarter Onion Sets** Every year these top-quality Dutch sets yield an excellent harvest of firm yellow semi-flat bulbs. Stuttgarters have a spicy allium flavor and easily store till June. We stir-fried these down with a bit of garlic and syrup, filled a pie crust, topped with feta, baked, and savored.

7000 Stuttgarter, 1#/\$7.25; 3#/\$17.25; 10#/\$42.75;  
25#/\$83.00; 50#/\$141.00

**Red Baron Onion Sets** A fine red onion with a round-teardrop shape and stunning maroon skin. Mild sweet onion flavor excels for salads and sandwiches. Quality Dutch sets size well: many in the 3" range. Bunch as large fresh onions for early-summer market, or cure and store through most of the winter.

7010 Red Baron, 1#/\$9.00; 3#/\$22.00; 10#/\$56.00; 32#/\$127.00

**White Ebenezer Onion Sets** These small white bulbs make great early-season bunching onions. We planted them 2" apart, thinned them for baby onions as they grew, then sold the rest in late August. They don't size up but make perfect pearls for soups and stews. Crystal white green-shouldered onions like these carry the sharp bite that your BLT has been missing. **NEW!**

7015 White Ebenezer, 1#/\$8.25; 3#/\$20.00;  
10#/\$56.00; 25#/\$127.00

**Yellow Moon Dutch Shallots** *A. c.* (aggregatum group)

Also called Multiplier Onions. Beautiful vigorous plant with many onion-like leaves, good as green onions (scallions) in spring and early summer.

Beefy yellow bulbs with good skin quality mature early. For large shallots, maintain high fertility and steady moisture. Outstanding storage quality.

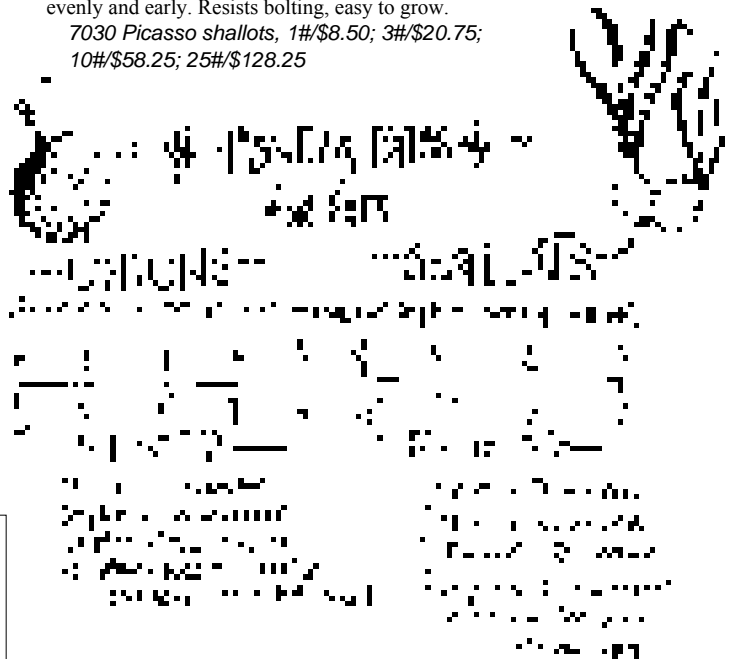
7020 Yellow Moon shallots, 1#/\$8.50;  
3#/\$20.75; 10#/\$58.25; 25#/\$106.00

**Picasso Shallots** *A. c.* (aggregatum group) Red-brown skins and round bulbs with pink flesh.

Gourmet addition to meals fresh from your garden, Picasso features very mild flavor without the onion bite. Use them raw in salads or dressings, or sautéed in sauces. Throw a chicken into a Dutch

oven with shallots, garlic and many tomatoes and bake at 200 ° all afternoon for a supper stew. Plant in early spring. Produces a uniform crop that matures evenly and early. Resists bolting, easy to grow.

7030 Picasso shallots, 1#/\$8.50; 3#/\$20.75;  
10#/\$58.25; 25#/\$128.25



### What is Certified Seed?

All certified seed potatoes start as disease-free clones and are sold to seed growers as minitubers. In Maine, seed potato growers are allowed to replant for six years before they need to start again with disease-free stock. Each year during the growing season farmers seeking certification have their fields inspected for viral and bacterial diseases. After harvest the farmers send samples of each variety to Florida where they are grown out during the winter for inspection. To be labeled and sold as **certified potato seed**, lots need to be 100% free of certain pathogens and at least 95% free of others.

**We sell only certified potato seed.** None of our varieties is genetically engineered. See page 7 for Fedco's policy.

We also offer many varieties that are **certified organic**. Their growers have met both the standards of potato seed certification and the standards of organic production.

Our potatoes come from several sources: well-established conventional growers in Maine's Aroostook County, in West Virginia, New York and Colorado. We have at least five suppliers for certified organic varieties. See chart on page 106 for source of each variety.

## GROWING POTATOES

### Upon Arrival

Inspect your order as soon as it arrives. If you are not going to plant within two weeks, store seed in a dark cool (around 40 °) fairly humid place. Do not remove growing sprouts; these are your new plants.

### Chitting or Green Sprouting

You may use chitting to encourage early growth, speed development of marketable tubers, and perhaps increase yields. Warm tubers to 65° in the dark for about two weeks, then spread them out with most of the eyes facing up in a warm place (60–70°) with medium light intensity for about two weeks. This stimulates strong stubby sprouts at the bud end that are not easily broken off.

### Soil Preparation

Potatoes grow in any well-drained fertile soil. Work in compost or aged manure. Using uncomposted manure, lime or wood ash the year of planting will increase the incidence of scab. Turn new ground the year before and plant with a rye/vetch cover crop. Rotate potatoes (and other Solanaceae family members: tomatoes, peppers and eggplants) with other plant families in at least a 3-year or, preferably, a 4-year rotation.

### Cutting Seed

Small tubers planted whole are less sensitive to seed piece decay than cut pieces. You can cut large tubers into pieces of two ounces or more, about the size of an egg, with at least two eyes. Many varieties have eyes clustered at one end, so be sure to distribute eyes evenly when cutting. Fingerling eyes spiral the length of the tuber so you may cut them into discs or wedges. To reduce the risk of seed piece decay, either cut and plant in one operation or condition the cut seed pieces at 55–60° and 90% humidity for 3–4 days. Covering pieces with damp burlap bags or towels is a way to maintain humidity levels.

### Planting

Plant when the soil is 55–60 ° and dry enough to work easily, about when dandelions bloom. Planting in cooler soil slows emergence and increases the chance of seed piece decay. Planting in hot dry soil also increases the risk of seed piece decay. Plant in furrows 4–6" deep, in rows that allow for your style of hilling. Space new potatoes and fingerlings at 8" for maximum tuber set. Space later-season varieties at 10–12" for maximum size. One pound of seed will usually plant 5–8 row feet, depending on the variety; 20 pounds will usually plant 100 row feet. 2 oz. seed pieces 12" apart with 40" row spacing, requires approximately 1600 lbs. (or 1000 lbs. fingerlings) per acre.

### Cultivation and Hilling

Cultivate shallowly as needed during early growth. Hill when plants reach 6" and again at 12–15". After the second hilling, plants will shade and outcompete weeds. Don't cover plants completely when hilling. Be gentle so as not to damage the roots. Hilling gives the plants room to develop potatoes between the seed piece and the soil surface; it also warms the roots, stimulating growth. Mulching plants after the second hilling helps to retain soil moisture, control weeds and reduce incidence of sunburn.



### Irrigation

Potato plants are sensitive to small changes in soil moisture because of their shallow (12–15") root systems. Tuber yield and size are directly related to the amount of water available during two critical growth stages: tuber initiation and tuber bulking. Tuber initiation is a 10–14 day period when tubers form at stolon tips. For most varieties, the end of this stage coincides with early flowering. Tuber bulking follows and continues until plants are mature. Lack of water tends to increase incidence and severity of scab, and will affect yield and overall size of the potatoes. Inconsistent water may cause growth cracks, hollow heart and second growth. Ensure 1" of water weekly from plant emergence until two weeks before harvest.

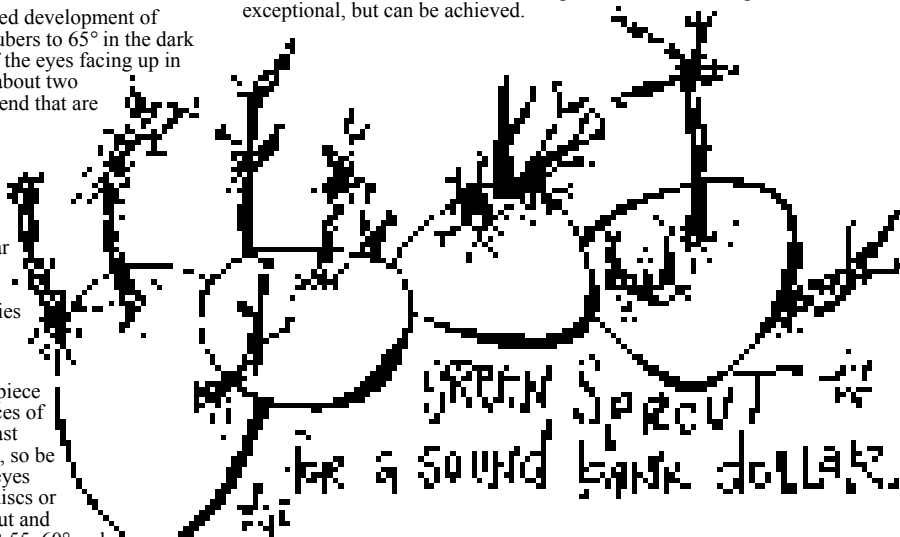
### Harvest and Storage

Early harvest or "robbing the plant" can be done anytime you can find potatoes, approximately 60 days after planting or 30 days after flowering. These are new potatoes to be eaten; they will not store well.

Potato plants are mature when the vines start to senesce, or die back and fall over. You may cut, mow, flame-kill or allow them to die naturally. Leave tubers in the ground for 14–21 days after the vines are dead before digging to give the skin time to "set," and to prevent transmission of blight spores from foliage to tubers. Harvest in cool dry weather if possible. After a brief drying, out of direct sunlight, lightly brush off excess dirt but don't wash potatoes intended for storage. Hold at 55–60 ° for several weeks to allow harvest injuries and bruising to heal; then store only sound tubers at 38–40 ° with 85–90% relative humidity in complete darkness.

### Yields

An average yield is 10 pounds harvested to 1 pound planted (10:1). Less than 6:1 probably indicates a problem, likely caused by low fertility, lack of water, or excessive disease or insect pressure. Yields as high as 20:1 are exceptional, but can be achieved.



POTATOES

### Late Blight

Late blight is a fungal disease that attacks the foliage, fruit, and tubers of tomatoes and potatoes. The fungus *Phytophthora infestans* (genus translates as 'plant destroyer') flourishes in cool, wet conditions and can wipe out robust plants. Traveling by air (though it can be seed-borne in potatoes as well), the spores swiftly proliferate in wet conditions between 60 and 80°.

Infected plants develop greyish black lesions on leaves and stems, often accompanied by fuzzy white fungal growth. Left uncontrolled, the blight can spread to the tubers as well.

#### Here are a few tips for healthy crops:

- Plant only seed that is certified disease-free (that's us).
- Consider beginning the season with a regular spray of a broad-spectrum biofungicide. Available from Organic Grower's Supply, Serenade and Actinovate colonize leaf surfaces with beneficial bacteria that inhibits the growth of predatory fungus. OGS also offers Champ WG, a copper hydroxide formulation, and Concern, a copper soap fungicide, as preventive measures.
- Avoid overhead irrigation just before dusk, as prolonged wet vegetation is a prime target for the blight. And hill potatoes well to reduce the transmission of infection from leaf to tuber.
- Do not compost any infected plant material. Freezing kills spores, but only if the plant tissue is dead. The best method to sterilize your field for next year may be to leave sick plants on the surface to freeze.

Stay up-to-date by watching MOFGA's bulletins (Go to [www.mofga.org](http://www.mofga.org), choose Publications, then Pest Reports) or contact your local Cooperative Extension Service for more information.

We highlight a few items **LBR** for their field resistance to late blight.

## Potatoes at a Glance

| Variety           | OG   | CS   | Maturity | Skin Color              | Flesh Color | Shape | Texture       | Yield | Storage | Scab       |           |
|-------------------|------|------|----------|-------------------------|-------------|-------|---------------|-------|---------|------------|-----------|
|                   |      |      |          |                         |             |       |               |       |         | Resistance | Certifier |
| Adirondack Red    | 7250 | 7750 | M        | red                     | pinkish-red | R     | moist, firm   | M     | G       | G          | M         |
| Austrian Crescent | 7100 |      | M-L      | tan                     | lt. yellow  | F     | waxy          | H     | G       | H          | M,C       |
| Augusta           | 7175 | 7640 | E        | yellow w/pink           | gold        | R     | waxy          | H     | G       | G          | M         |
| Banana            | 7110 | 7610 | M-L      | yellow                  | yellow      | F     | waxy          | H     | G       | H          | M,C       |
| Binjje            |      | 7860 | L        | yellow                  | yellow      | Ob    | waxy          | H     | F       | M          | C         |
| Blue Gold         | 7255 | 7760 | E-M      | blue                    | yellow      | R     | moist, waxy   | M     | G       | G          | M         |
| Carola            |      | 7770 | M        | yellow                  | yellow      | Ob    | moist, firm   | H     | G       | H          | M,C       |
| Chieftain         | 7180 | 7650 | E        | pinkish-red             | W           | R     | mealy, floury | H     | F       | H          | M         |
| Dark Red Norland  | 7190 | 7670 | E        | dark red                | W           | Ob    | moist, firm   | H     | F       | H          | M         |
| Desiree           | 7345 |      | L        | rose red                | yellow      | L-Ov  | moist, firm   | H     | G       | M          | C         |
| Elba              |      | 7870 | L        | buff                    | W           | R     | moist, firm   | H     | E       | H          | M,WV      |
| French Fingerling | 7120 | 7620 | M-L      | dark rose-red           | yellow      | F     | waxy          | H     | G       | H          | M,C       |
| Frontier Russet   |      | 7680 | E        | light russet            | W           | Ob    | dry, mealy    | H     | G       | H          | M         |
| German Butterball | 7360 | 7880 | L        | yellow w/ light russet  | yellow      | Ob    | medium-dry    | M-H   | E       | G          | M,C       |
| Green Mountain    |      | 7890 | L        | buff                    | W           | Ob    | dry, mealy    | H     | E       | M          | M         |
| Irish Cobbler     |      | 7690 | E        | buff                    | W           | R     | dry, creamy   | M     | S       | M          | M         |
| Katahdin          |      | 7900 | L        | buff                    | W           | R     | moist, firm   | H     | E       | M          | M         |
| Kennebec          | 7270 | 7790 | M        | buff                    | W           | Ob    | moist, firm   | H     | E       | M          | M         |
| Keuka Gold        | 7280 | 7800 | M        | buff                    | lt. yellow  | R-Ob  | moist, firm   | H     | G       | H          | M,WV      |
| LaRatte           | 7130 |      | L        | yellow netted           | yellow      | F     | waxy          | H     | G       | G          | C         |
| Nicola            |      | 7810 | M        | yellow                  | yellow      | L-Ov  | waxy          | M-H   | G       | G          | C         |
| Purple Viking     | 7300 | 7820 | M        | purple w/ pink splashes | W           | R     | moist, firm   | H     | E       | H          | C         |
| Red Gold          |      | 7700 | VE       | red                     | yellow      | R     | waxy          | H     | S       | M          | M         |
| Red Maria         | 7305 | 7830 | M        | red                     | W           | R     | moist, firm   | H     | G       | H          | M,WV      |
| Red Pontiac       |      | 7910 | L        | red                     | W           | R     | moist, firm   | H     | E       | M          | M         |
| Red Thumb         | 7160 |      | L        | red                     | red         | F     | waxy          | M     | G       | M          | C         |
| Rio Grande Russet | 7310 |      | M        | russet tan              | W           | Ob-L  | dry, mealy    | H     | G-E     | G          | C         |
| Romanze           |      | 7920 | L        | red                     | yellow      | Ob    | moist         | H     | G       | G          | C         |
| Rose Finn Apple   | 7170 | 7630 | M-L      | pinkish-beige           | lt. yellow  | F     | waxy          | H     | G       | H          | C         |
| Russet Burbank    |      | 7930 | VL       | russet                  | W           | L     | dry, mealy    | H     | E       | H          | M         |
| Salem             |      | 7840 | M        | buff                    | W           | R-Ob  | moist, firm   | H     | E       | G          | WV        |
| Sangre            | 7220 |      | E        | deep red                | W           | Ob    | moist, firm   | M-H   | E       | G          | C         |
| Satina            |      | 7730 | M-E      | yellow                  | yellow      | Ov    | moist, firm   | H     | E       | H          | NY        |
| Yellow Finn       | 7330 | 7850 | M        | yellow                  | yellow      | OF    | moist, firm   | M-H   | E       | G          | C         |
| Yukon Gold        | 7230 | 7740 | VE       | yellow-buff             | yellow      | Ov    | dry, mealy    | L     | E       | M          | M,C       |

OG: Organically Grown  
 CS: Conventional Seed  
 Maturity: VE=very early  
 E=early  
 M=midseason  
 L=late  
 VL=very late

Flesh: W=white  
 Shape: R=round  
 L=long  
 Ob=oblong  
 Ov=oval  
 OF=oval-flat  
 F=fingerling

Yield: L=low  
 M=medium  
 H=high

Storage: S=short  
 F=fair  
 G=good  
 E=excellent

Scab Resistance: M=moderate  
 G=good  
 H=high

Certifier, state certification agency:  
 M=Maine  
 C=Colorado  
 NY=New York  
 WV=West Virginia

## Substitutions

Because potatoes are subject to crop limitations, we run out of some varieties. Most people prefer getting potatoes to a refund.

**Unless you indicate that you will not accept substitutions, we'll follow this protocol:**

**For commercial varieties -**

We will substitute a variety of similar color and season.

**For organic varieties -**

We will substitute the same variety, grown without synthetic insecticides, fertilizers or herbicides, but not *certified* organic and refund the price difference.

If that's not available, we will substitute conventional stock of the same variety and refund the price difference.

If neither of those is available, we'll substitute certified organic stock of a similar variety.

**If you have specific preferences, indicate them on your order sheet.**

## Bulk Prices

If you are ordering over 1000 pounds, download a bulk price list, or call or write for one.



## SUNCHOKES

*Helianthus tuberosus*

Also known as **Jerusalem Artichokes**, these vigorous perennial tubers can be dug in the fall and stored in tight containers to conserve moisture, or in the spring as an early fresh vegetable. Taste and texture resemble water chestnuts. Also used as

ornamentals for their 6–8' annual foliage with golden daisy-like flowers on top. **Caution:** plant sunchokes in an area that is easy to control; they will spread and are nearly impossible to eradicate.

Plant whole or cut into pieces with 1–2 eyes. Plant 4" deep, 12–18" apart. One pound contains approximately 12 pieces.

Will Bonsall of Scatterseed Project is the Seed Savers Exchange curator for sunchokes and has one of the largest known sunchoke collections. Will is our chief grower and supplier of sunchoke seed: check out the sidebar below for more of his activities. Maine-grown without herbicides, pesticides or chemical fertilizers. If we run out of a variety we will substitute a generic white, grown by Will or another local grower.

**Sunchokes are shipped separately in early May.**

**Clearwater** One of Will Bonsall's favorites, collected near his backyard, Clearwater's tubers are knobless, making them easy to wash and peel. They are crisp and tasty, with roughish ivory skin and white flesh. While they are the slowest variety to break dormancy in the spring, they retain tender qualities long into the fall.

7050 Clearwater Sunchokes, 1#/\$12.00; 3#/\$25.75; 10#/\$80.00; 25#/\$178.00

**Skorospelka** Skorospelka is the outcome of a Soviet-era breeding program featuring a compact set and smooth tubers. Each plant yields a fair number of tubers, but the considerable size of the round blunt-ended tubers accounts for the excellent overall yield, while the relatively knob-free shape is popular with cooks. Skin is a dull bluish-purple, not as attractive as the deep rose of Waldspinel.

7060 Skorospelka Sunchokes, 1#/\$12.00; 3#/\$25.75; 10#/\$80.00; 25#/\$178.00

**Waldspinel** A landrace from the Austrian grassroots seed organization Noah's Ark. Waldspinel's skin is an attractive rose-red which is emphasized by the yellow-white tuber stem. It yields lots of tubers per plant; however the individual tubers are somewhat smaller than Skorospelka and more prone to knobiness. As with potatoes, skin color can vary considerably according to soil types.

7070 Waldspinel Sunchokes, 1#/\$12.00; 3#/\$25.75; 10#/\$80.00; 25#/\$178.00

### SCATTERSEED PROJECT

In 1971 Will Bonsall moved to Industry, Maine, to live simply and self-sufficiently. From the beginning, he realized one of the cornerstones of self-reliance was saving his own seed. He discovered that older farmers and gardeners in his area grew varieties that had never been in any seed catalog. As these varieties were in danger of extinction, Will became their guardian. Among these heirlooms were Cowhorn potato, Orange Sweet apple, Orlando's Horticultural pole bean, Boothby's Blonde cucumber, Waldoboro rutabaga and Byron flint corn. The diversity Will encountered inspired him to start saving plants such as biennial outcrossers that are more difficult to propagate.

Naturally, Will became involved with the Seed Savers Exchange; his Scatterseed Project is now by far the largest member. In addition to serving on SSE's Advisory Board, he is also its central curator for potatoes, peas, sunchokes, fava beans, runner beans, radishes, turnips, rutabagas, leeks, parsleys, parsnips, carrots, beets, chards and brussels sprouts. In addition to the varieties he curates, Will saves and reoffers seed for most everything that comes his way including hundreds of beans and tomatoes. His collections comprise 3–4000 varieties; he's lost track of the total.

The Scatterseed potato collection requires a complete grow-out of all 700–800 varieties every single year. Biennial crops such as parsnips, carrots, leeks and turnips need to be stored over winter in a protected cellar and then replanted. Will keeps each variety pure by a combination of caging and planting in isolated plots. All of this is very labor intensive and demands attention to details such as introducing pollinators into the cages or controlling pest infestations.

Scatterseed may be the only place on the planet where some of these varieties are still alive. Here a little more labor can mean huge success. Any time a variety is rescued, Will has more diversity to scatter. He thinks farm fields and backyard gardens are ultimately the safest place to preserve crop genetic diversity. Your donations make a very real impact—almost \$1700 in 2011 enabled him to hire and train more workers. We thank everyone who has donated in the past; those planning to support Scatterseed this year, please see the Moose Tubers order form.

## SEED POTATOES *Solanum tuberosum*

### COLLECTIONS

Having trouble deciding which variety to choose? We put together collections to help. This year we will choose varieties in the spring when we know better what our inventory contains, but we guarantee a diverse selection in every collection. All varieties will be labeled. We might even include one that is not listed in the catalog.

**Specialty Organics** A spud selection from our favorite organic growers, a well-rounded organic mesclun to cover the seasonal potato spectrum. We'll choose five different varieties to provide earlies and lates, reds, yellows and whites. Taste the difference that organic production can make. 2 1/2# of each variety.

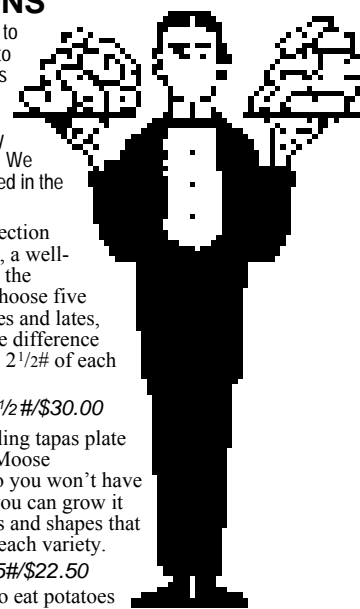
7080 Specialty Organics, 12 1/2#/\$30.00

**Fantastic Fingerlings** A sparkling tapas plate including five varieties from our Moose warehouse. A bit of everything, so you won't have to choose. If you find a favorite, you can grow it next year. Sample the many colors and shapes that these "potatolitas" provide. 1# of each variety.

7085 Fantastic Fingerlings, 5#/\$22.50

**Classic Keepers** Yes, we like to eat potatoes during the growing season, but most important, we must feast through the winter. This collection of five different time-tested winter-storage potatoes will keep your stove cranking and bellies smiling right through spring parsnip digging. Reds, yellows and whites for full baskets in your root cellar. 2 1/2# of each variety.

7090 Classic Keepers, 12 1/2#/\$21.50



### We are Certified Organic Handlers

Moose Tubers, as part of Fedco Seeds, is a certified organic handler. Our organic seed is certified by USDA-approved agencies. We have copies on file of each grower's certificate; our products are labeled accordingly and handled in ways to ensure their integrity.

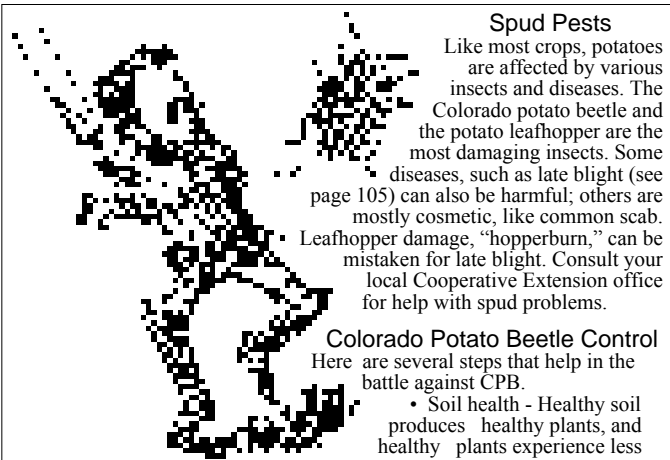
The printout you receive with your order has our certification number and is your receipt and certificate that what you purchased is organic. Please keep it for your records.

We are handling live plant material. We sometimes have short crops and failed lots. We do occasionally substitute conventional varieties unless you note otherwise. Please see our substitution policy on page 106.









**Spud Pests**

Like most crops, potatoes are affected by various insects and diseases. The Colorado potato beetle and the potato leafhopper are the most damaging insects. Some diseases, such as late blight (see page 105) can also be harmful; others are mostly cosmetic, like common scab. Leafhopper damage, "hopperburn," can be mistaken for late blight. Consult your local Cooperative Extension office for help with spud problems.

**Colorado Potato Beetle Control**

Here are several steps that help in the battle against CPB.

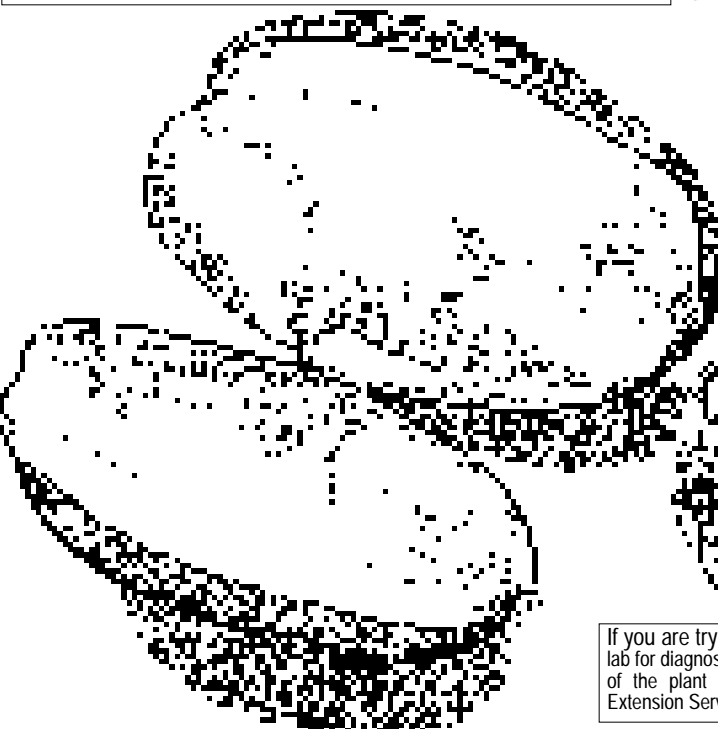
- Soil health - Healthy soil produces healthy plants, and healthy plants experience less insect and disease pressure.
- Crop rotation - Rotating plant families in 3-5 year rotations really helps to control insect and disease problems.
- Field scouting - In home gardens, as plants emerge, handpick beetles and larvae; drop them into a container of soapy water. Look under the leaves for orange egg masses and squish them.
- Beneficial insects - Predatory beetles play an important role in a healthy field and Nematodes (#8940-3) attack CPB larvae.
- Walking the field - Several days after spraying, handpick larvae that the spray missed.
- Planting potatoes later than normal - takes plant emergence out of sync with beetles' cycle and helps reduce CPB's early egg laying.

We list several products for certified-organic growers but *be aware* that no pest- or disease-control product is allowable without filing a plan for its use under the NOP. See page 112 for more information. Products to consider include:

- Surround (#8870), a kaolin clay formulation, forms a white barrier on leaves.
- Bugitol (#8890-1), mustard and hot pepper oils kill and repel insects and fungi.
- Naturalis (#8921), a formulation of the soilborne fungus *Beauveria bassiana*, which attacks a wide range of adult and immature insects.
- Entrust (#8922), is spinosad, an insecticide active on several orders of insects.
- Monterey Garden Spray (#8923-4), a spinosad for home gardens.
- Pyganic (#8925), broad-spectrum pyrethrum insecticide.

Unfortunately we can no longer find Bt for CPB control in sizes for home gardeners or that is allowed for organic certification.

As always, vigilance is the watchword. Please send us your feedback: what worked or didn't work for you?



If you are trying to identify a pest or need to send an insect or plant sample to a lab for diagnosis, go to <http://pmo.umext.maine.edu/ipddl/ipddl.htm>, a useful website of the plant disease diagnostic laboratory, or contact your local Cooperative Extension Service.

**CONVENTIONAL FINGERLINGS**

**Banana** yellow skin, yellow flesh See description on page 108.

7610 *Banana*, 1#/\$5.50; 3#/\$11.75; 10#/\$31.00; 25#/\$52.00; 50#/\$106.00

**French Fingerling** dark rose-red skin, yellow flesh See description on page 108.

7620 *French Fingerling*, 1#/\$5.50; 3#/\$11.75; 10#/\$31.00; 25#/\$52.00; 50#/\$106.00

**Rose Finn Apple** pinkish-beige skin, yellow flesh See description on page 108.

7630 *Rose Finn Apple*, 1#/\$5.50; 3#/\$11.75; 10#/\$31.00; 25#/\$52.00; 50#/\$106.00

**CONVENTIONAL EARLY 65-80 days**

**Augusta** yellow skin with pink eyes, gold flesh Description on page 108.

7640 *Augusta*, 2 1/2#/\$4.50; 5#/\$6.50; 20#/\$15.50; 50#/\$35.00

**Chieftain** red skin, white flesh LBR. Description on page 108.

7650 *Chieftain*, 2 1/2#/\$3.50; 5#/\$4.50; 20#/\$9.25; 50#/\$20.00

**Dark Red Norland** dark red skin, white flesh Description on page 108.

7670 *Dark Red Norland*, 2 1/2#/\$3.75; 5#/\$5.25; 20#/\$13.00; 50#/\$20.00

**Frontier Russet** light russet skin, white flesh Excellent for that "down home potato." Not as dry as Burbank; stores well and is a great baker. Try it fried up Frenchie style. A consistent choice of Peacemeal Farm in

Dixmont, ME, requested by their eaters. Resistant to hollow heart and black spot. Please don't overwater late in the season, or growth cracks may appear.

Give it 12-14" spacing, ample nutrients and regular water to obtain optimal size. Strong disease resistance and long-time storage.

7680 *Frontier Russet*, 2 1/2#/\$4.75; 5#/\$7.25; 20#/\$20.00; 50#/\$31.00

**Irish Cobbler** buff skin, white flesh Slightly larger than a golf ball, great for roasting or mashing, with a smooth creamy texture. Like an early-season Elba for eating quality. Legend has it that an Irish shoemaker in the northeastern United States selected this variety from plants he grew from an Early Rose seed ball. First cataloged in 1876. Even dug early, Cobblers will store throughout the season. Resistant to mild mosaic and immune to wart. Medium-sized plant has white-tipped lilac flowers.

7690 *Irish Cobbler*, 2 1/2#/\$3.75; 5#/\$5.25; 20#/\$13.00; 50#/\$20.00

**Red Gold** red skin, yellow flesh A true gem among the earlys, easily only 65 days. Often the first dug of the season, when market-goers clamor for those first new potatoes. While some growers grumble about poor emergence, these plants can provide a bountiful harvest of 2" tubers. They need only a light steam, a toss in butter, and a touch of salt. Poor for storage, so eat 'em up! Introduced by AgCanada in 1987.

7700 *Red Gold*, 2 1/2#/\$5.00; 5#/\$7.25; 20#/\$19.50; 50#/\$30.00

**Satina** yellow skin, yellow flesh They say farming leaves you wicked haggard, so polish up your style for city market with these stunningly chic Satinas. Their soft buttery flesh and yellow skin are smooth as silk. Ian of Stone Cipher Farm in Bowdoinham says "this ain't no Mickey D's fry trash. Satinas are the sparkplug in our skillet." When dug, each plant has one or two thick stalks with a string of large round tubers dangling beneath. Satinas store well and are resistant to common scab. PVP.

7730 *Satina*, 2 1/2#/\$5.50; 5#/\$8.00; 20#/\$21.75; 50#/\$35.00

**Yukon Gold** yellow-buff skin, yellow flesh See page 108 for description.

7740 *Yukon Gold*, 2 1/2#/\$4.00; 5#/\$5.50; 20#/\$13.00; 50#/\$20.00



## CONVENTIONAL MID-SEASON 80-90 days

**Adirondack Red** red skin, pinkish-red flesh See page 109 for description.

7750 Adirondack Red, 2½#/\$4.75; 5#/\$6.25; 20#/\$17.00;  
50#/\$26.00

**Blue Gold** or **Peter Wilcox** blue skin, yellow flesh Description on page 109.

7760 Blue Gold or Peter Wilcox, 2½#/\$5.00; 5#/\$7.50;  
20#/\$18.75; 50#/\$30.00

**Carola** yellow skin, yellow flesh Known for its culinary versatility and delicious flavor. Baked, boiled, fried, mashed, scattered, smothered and covered, this potato can be dug early and will keep fresh qualities for months in proper storage conditions. Paula Fulford swears it's the only potato worth growing. Carolas are known for their susceptibility to seed piece decay and, if adequate nutrition needs are not met, yields may be inconsistent. Medium spreading plants with white flowers.

7770 Carola, 2½#/\$5.00; 5#/\$7.25; 20#/\$19.50; 50#/\$30.00

**Kennebec** buff skin, white flesh See description on page 109.

7790 Kennebec, 2½#/\$4.75; 5#/\$7.00; 20#/\$18.00; 50#/\$30.00

**Keuka Gold** buff skin, light yellow flesh See description on page 109.

7800 Keuka Gold, 2½#/\$5.50; 5#/\$8.00; 20#/\$22.50; 50#/\$35.00

**Nicola** yellow skin, dark yellow flesh For weeks after the Yukons were devoured by late blight in 2009, the Nicolas continued to beef up and remained the only golden-fleshed market potato in our patch. Developed in the Netherlands and Germany, these potatoes are on the waxy side and hold their shape, making a potato salad of museum quality. Naturally grown. LBR.

7810 Nicola, 2½#/\$5.00; 5#/\$7.50; 20#/\$20.00; 50#/\$31.00

**Purple Viking** purple skin with pink splashes, white flesh Naturally grown. See page 109 for description.

7820 Purple Viking, 2½#/\$5.00; 5#/\$7.50; 20#/\$20.00; 50#/\$31.00

**Red Maria** red skin, white flesh See description on page 109.

7830 Red Maria, 2½#/\$5.50; 5#/\$8.25; 20#/\$22.50; 50#/\$35.00

**Salem** buff skin, white flesh Elba's midseason sister. The generously impressive yields on these plants will find your bushel baskets brimming with these dependable all-purpose potatoes. They will store well into the winter, and their roundish oblong shape and rich earthy flavor make them an exceptional potato chipper. The plants emerge quickly after planting and bulk fast. Resistant to scab and golden nematode.

7840 Salem, 2½#/\$5.00; 5#/\$7.25; 20#/\$20.00; 50#/\$31.00

**Yellow Finn** yellow skin, yellow flesh See page 109 for description.

7850 Yellow Finn, 2½#/\$5.00; 5#/\$7.25; 20#/\$20.00; 50#/\$31.00



## CONVENTIONAL LATE more than 90 days

**Bintje** yellow skin, yellow flesh Or Miss Bintje, named after a pupil of the Dutch schoolteacher who released this variety in 1905. (Dutch pronunciation is something like BIN-tcheyeh, but it's been Americanized to BEN-jee.) The most widely grown yellow-fleshed potato in the world because of its adaptability to a wide range of soil types, storability, and proficient growth habits. Large clusters of smooth golden-fleshed tubers will appear beneath these quickly germinating, vigorous plants. Exquisite flavor; the Dutch know a thing or two about breeding desirable potatoes. Space at 16–18". Naturally grown.

7860 Bintje, 2½#/\$5.00; 5#/\$6.50; 20#/\$16.00; 50#/\$31.00

**Elba** buff skin, white flesh Excellent yields of large smooth tubers with moist firm flesh. The white storage potato pick of Freedom Farm, Waldo County growers who have steady streams of spud gobblers. Don't lose hope early in the season because these plants are slow to emerge. The vigorous plants show good resistance to leaf hoppers, Colorado potato beetle, verticillium wilt, early blight, late blight, and common scab. The tubers set high, so hill like a professional. LBR.

7870 Elba, 2½#/\$5.50; 5#/\$7.75; 20#/\$19.50; 50#/\$37.00

**German Butterball** yellow skin, yellow flesh Description on page 109.

7880 German Butterball, 2½#/\$5.25; 5#/\$7.75; 20#/\$22.00;  
50#/\$35.00

**Green Mountain** buff skin, white flesh Many consider this 1885 heirloom to be the most flavorful of all. People ask for it by name year after year. O. H. Alexander of the Green Mountains of Vermont bred it from Dunsmore (a seedling of Burbank) and Excelsior. Dry texture for outstanding baking qualities, really soaks up the butter. Good appearance and great flavor don't fade in long storage. Resistant to fusarium storage rot, black leg and verticillium wilt. Susceptible to viral diseases.

7890 Green Mountain, 2½#/\$4.00;

5#/\$5.50;

20#/\$13.50;

50#/\$20.00

Naturally grown =  
Sustainably grown  
without synthetic  
pesticides, herbicides  
or chemical  
fertilizers.



POTATOES

**Katahdin** buff skin, white flesh The choice winter potato for northeastern growers. Released in 1932 by the USDA and Maine, it is the standard by which all storage potatoes are compared. Very well suited to a Maine growing season, spreading plants can produce some clunkers. The tubers tend towards the soil's surface, so hill well. Resistant to mild mosaic, but not spindle tuber or leaf roll. Medium-to-large spreading plant with many large light purple flowers.

7900 Katahdin, 2½#/\$4.00; 5#/\$5.25; 20#/\$13.00; 50#/\$20.00

**Red Pontiac** red skin, white flesh Also known as **Dakota Chief**, this variety is a cross between Bliss Triumph and Katahdin. Large rounded oblong tubers have dark red smooth skin. A favorite for mashed potatoes, with a distinctive sweet flavor and creamy texture. This variety is resistant to drought, but susceptible to scab. Unless you're raising fodder for your spud cannon, plant closely to avoid gigantors which can become knobby with second growth. A blue-ribbon winner for red potatoes.

7910 Red Pontiac, 2½#/\$4.00; 5#/\$5.25;

20#/\$13.00; 50#/\$20.00

**Romanze** red skin, yellow flesh High yields and great storage! Another German potato resistant to blight, scab, and wart. A late maturer, but it's worth the wait. Firm yellow flesh is just dry enough—when roasted the outside crisps while the inside stays creamy. These succulent red tubers are husky enough to last you through the winter. Some susceptibility to leaf roll virus. LBR. PVP.

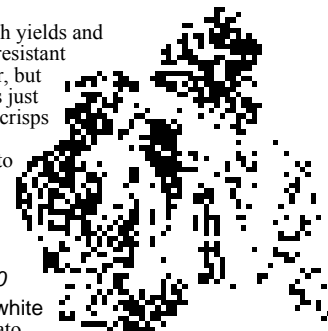
7920 Romanze, 2½#/\$5.00;

5#/\$7.25; 20#/\$20.00; 50#/\$31.00

**Russet Burbank** russet skin, white flesh Known to most as the Idaho Potato, the dry mealy texture makes it an old trusty favorite. A great whatever-you-want-to-do-with-it potato; you'll have the whole winter and spring to experiment with it in the kitchen. Its reliably high yields mature late in the season, and the plants show resistance to scab, black leg, and fusarium. This dependable standard requires heavy feeding and regular moisture for exceptional performance.

7930 Russet Burbank, 2½#/\$4.00; 5#/\$5.25; 20#/\$13.00;

50#/\$20.00



# Moose Tubers 2012

PO Box 520  
Waterville ME 04903

from mailing label CC \_\_\_\_\_

Farm or Group Name \_\_\_\_\_

Deliver to: Name \_\_\_\_\_

US Mail \_\_\_\_\_

Town \_\_\_\_\_ State \_\_\_\_\_ Zip \_\_\_\_\_

UPS (include road name) \_\_\_\_\_

Town \_\_\_\_\_ State \_\_\_\_\_ Zip \_\_\_\_\_

phone \_\_\_\_\_ email \_\_\_\_\_

## Potatoes, onion sets and sunchokes, items 7000-7999, pages 104-111

|  | Item# | Size | How many | Variety | Price each | Weight Total | \$ Total |
|--|-------|------|----------|---------|------------|--------------|----------|
|  | 1     |      |          |         |            |              |          |
|  | 2     |      |          |         |            |              |          |
|  | 3     |      |          |         |            |              |          |
|  | 4     |      |          |         |            |              |          |
|  | 5     |      |          |         |            |              |          |
|  | 6     |      |          |         |            |              |          |
|  | 7     |      |          |         |            |              |          |
|  | 8     |      |          |         |            |              |          |
|  | 9     |      |          |         |            |              |          |
|  | 10    |      |          |         |            |              |          |
|  | 11    |      |          |         |            |              |          |
|  | 12    |      |          |         |            |              |          |

POTATOES

Order online: [www.fedcoseeds.com](http://www.fedcoseeds.com)

page 70C

### Delivery Options ✓ one only

- UPS order by 3/16
  - Tree Sale Pickup order by 3/16
  - Common Carrier for large orders. Be sure to include a daytime phone number or email. ✓ week for delivery:
    - April 2-6
    - April 9-13
    - April 16-20
- weight p.74C
- weight p.74D
- total weight

See substitution policy on p. 106

Will you accept substitutions? Yes  No

Will you accept conventional for organic seed?

**Volume Discounts**  
(orders received by March 2)

5% over \$200  
10% over \$400  
15% over \$850

If you order over 1000 lbs download or call for our bulk price list.

- Donate all my refund to Scatterseed (p. 107)
  - up to \$5.00
  - up to \$2.00

Mainers and pickups only 5% tax

Donate to Scatterseed (p.107)

|                          |   |
|--------------------------|---|
| page 74D                 | + |
| Subtotal                 | = |
| Adjusted Total           | = |
| Volume Discount          | - |
| 1% Member Discount       | - |
| Shipping use chart below | + |
| Grand Total              | = |

Make checks payable to Fedco

Final Order Deadline 3/16/12

| If your order weighs  And your zip code begins with: | 0-2 lbs. | up to 5 lbs. | up to 10 lbs. | up to 15 lbs. | up to 20 lbs. | up to 25 lbs. | up to 30 lbs. | up to 35 lbs. | up to 40 lbs. | over 40 lbs. | over 200 lbs. | over 500 lbs. | For larger orders, consider Common Carrier. Up to 2000 lbs:       |
|--|----------|--------------|---------------|---------------|---------------|---------------|---------------|---------------|---------------|--------------|---------------|---------------|---|
| 038-049  | \$5.20   | \$11.25      | \$12.50       | \$13.25       | \$14.00       | \$15.00       | \$16.00       | \$16.75       | \$17.75       | 39¢/lb       | 32¢/lb        | 25¢/lb        | ME \$90.00  |
| 010-037,050-067,120-123                              | \$5.55   | \$11.75      | \$12.50       | \$13.75       | \$15.00       | \$16.50       | \$17.75       | \$19.00       | \$20.50       | 41¢/lb       | 37¢/lb        | 28¢/lb        | MA & NH \$98.00   |
| 005, 068-119,124-149                                 | \$6.20   | \$12.75      | \$13.50       | \$14.00       | \$15.50       | \$17.00       | \$19.00       | \$20.50       | \$22.25       | 48¢/lb       | 38¢/lb        | 34¢/lb        | VT \$107.00   |
| 150-297,400-499                                      | \$7.90   | \$13.00      | \$14.00       | \$14.75       | \$17.00       | \$19.00       | \$21.25       | \$23.50       | \$25.50       | 55¢/lb       | 45¢/lb        | 38¢/lb        | RI \$92.00  |
| 298-399,500-582,600-726                              | \$8.60   | \$13.50      | \$14.50       | \$16.75       | \$19.75       | \$22.50       | \$25.50       | \$28.50       | \$31.25       | 69¢/lb       | 55¢/lb        | 43¢/lb        | CT \$105.00   |
| 583-593,727-778                                      | \$9.15   | \$13.75      | \$15.75       | \$19.00       | \$22.25       | \$25.50       | \$28.75       | \$32.00       | \$35.25       | 80¢/lb       | 64¢/lb        | 47¢/lb        | NY (except NYC) \$128.00  |
| others except AK & HI                                | \$10.20  | \$14.50      | \$16.75       | \$20.75       | \$24.75       | \$29.00       | \$33.00       | \$37.25       | \$40.50       | 85¢/lb       | 71¢/lb        | 57¢/lb        | For other locations call us at 207-873-7333 for more information. |
| AK, HI & Priority Mail                               | \$10.20  | \$18.35      | \$31.75       | \$41.75       | \$53.50       | \$59.25       | \$69.00       | \$76.00       | \$82.00       | \$2.05/lb    |               |               |   |

We accept Visa or MasterCard

|                      |                      |                      |                      |                      |                      |                      |                      |                      |                      |
|----------------------|----------------------|----------------------|----------------------|----------------------|----------------------|----------------------|----------------------|----------------------|----------------------|
| <input type="text"/> | <input type="text"/> | <input type="text"/> | <input type="text"/> | <input type="text"/> | <input type="text"/> | <input type="text"/> | <input type="text"/> | <input type="text"/> | <input type="text"/> |
|----------------------|----------------------|----------------------|----------------------|----------------------|----------------------|----------------------|----------------------|----------------------|----------------------|

Exp. Date

|                      |                      |                      |                      |
|----------------------|----------------------|----------------------|----------------------|
| <input type="text"/> | <input type="text"/> | <input type="text"/> | <input type="text"/> |
|----------------------|----------------------|----------------------|----------------------|

Your order will be charged on receipt.

Moose Tubers 2012, items 7000-7999, pages 104-111

POTATOES

|                 | Item | Size | How many | Variety | Price each | Weight Total | \$ Total |
|-----------------|------|------|----------|---------|------------|--------------|----------|
| 13              |      |      |          |         |            |              |          |
| 14              |      |      |          |         |            |              |          |
| 15              |      |      |          |         |            |              |          |
| 16              |      |      |          |         |            |              |          |
| 17              |      |      |          |         |            |              |          |
| 18              |      |      |          |         |            |              |          |
| 19              |      |      |          |         |            |              |          |
| 20              |      |      |          |         |            |              |          |
| 21              |      |      |          |         |            |              |          |
| 22              |      |      |          |         |            |              |          |
| 23              |      |      |          |         |            |              |          |
| 24              |      |      |          |         |            |              |          |
| 25              |      |      |          |         |            |              |          |
| 26              |      |      |          |         |            |              |          |
| 27              |      |      |          |         |            |              |          |
| 28              |      |      |          |         |            |              |          |
| 29              |      |      |          |         |            |              |          |
| 30              |      |      |          |         |            |              |          |
| 31              |      |      |          |         |            |              |          |
| 32              |      |      |          |         |            |              |          |
| 33              |      |      |          |         |            |              |          |
| 34              |      |      |          |         |            |              |          |
| 35              |      |      |          |         |            |              |          |
| 36              |      |      |          |         |            |              |          |
| 37              |      |      |          |         |            |              |          |
| 38              |      |      |          |         |            |              |          |
| 39              |      |      |          |         |            |              |          |
| 40              |      |      |          |         |            |              |          |
| 41              |      |      |          |         |            |              |          |
| 42              |      |      |          |         |            |              |          |
| 43              |      |      |          |         |            |              |          |
| 44              |      |      |          |         |            |              |          |
| 45              |      |      |          |         |            |              |          |
| 46              |      |      |          |         |            |              |          |
| 47              |      |      |          |         |            |              |          |
| 48              |      |      |          |         |            |              |          |
| 49              |      |      |          |         |            |              |          |
| 50              |      |      |          |         |            |              |          |
| 51              |      |      |          |         |            |              |          |
| 52              |      |      |          |         |            |              |          |
| 53              |      |      |          |         |            |              |          |
| 54              |      |      |          |         |            |              |          |
| 55              |      |      |          |         |            |              |          |
| page 74D totals |      |      |          |         |            |              |          |